



# Dedicated BIM Resources Your On-Demand Team in UAE

Pre Construction Support for UAE Clients - Onshore, Offshore, and Hybrid BIM Team Models

# Overview

Our **Dedicated BIM Resources service** provides skilled professionals to handle your BIM needs. These experts work exclusively on your projects, ensuring consistent quality and timely delivery. They specialize in Architectural, Structural, and MEP coordination. Every task is completed using advanced BIM tools and aligned with international and UAE standards.

The dedicated team focuses on delivering accurate 3D models, resolving clashes, and producing high-quality construction documentation. They integrate with your in-house team to ensure smooth project workflows. This service helps improve project coordination and reduces errors in design and execution.

We offer **flexible contracts** to match your project scope. You can **scale the team as per your requirements**. Whether it is a short-term or long-term engagement, we ensure seamless collaboration and reliable support for your project success.



Lower upfront costs



Reduced risk



Greater control



Reduced time to market



Quality assurance

# Our Expertise

## Architectural Design Services

- Schematic Design Development
- Detailed Architectural Drawings
- Coordination with Structural and MEP Systems
- 3D Visualization and Renderings
- Compliance with **Dubai Municipality Regulations**

## BIM and VDC Coordination

- 3D Modeling for All Project Disciplines
- Clash Detection and Resolution
- Coordination of Architectural, Structural, and MEP Systems
- Quantity Take-Offs and Cost Estimation
- Model Updates for Construction and As-Built Phases
- Construction Sequencing and Scheduling (4D)
- Laser Scanning to BIM Modeling

## Dubai Municipality (DM) Trakhees Approval

We provide all the necessary plans and drawings for Trakhees Approval of your project. These documents are essential for getting approvals from Dubai Municipality authorities. We follow all the **Trakhees Approval Regulations and Guidelines**.

# Flexible Staffing Contracts for Any Project Scope

## Short-Term Contracts

- Ideal for temporary or urgent project requirements.
- Quick deployment of skilled BIM professionals for immediate tasks.
- Flexible engagement periods to suit project timelines.

## Long-Term Contracts

- Dedicated resources for ongoing or multi-phase projects.
- Stability and consistency in project delivery.
- Proactive involvement in long-term planning and execution.

## Project-Based Contracts

- Resources assigned specifically for a single project.
- Complete focus on project goals from start to finish.
- Streamlined coordination with project-specific requirements.

## Customizable Contracts

- Flexible options tailored to your unique needs.
- Adjust team size, expertise, and contract duration as required.
- Scalable solutions for projects of any size and complexity.

# Onshore Team Model

Our **Onshore BIM Team Model** is designed to provide clients with **high-quality BIM services** while maintaining close communication and collaboration with the client's project team. With our onshore team, clients can benefit from the following advantages:

## Seamless communication

Our onshore team works in the same country as the client and can communicate seamlessly with the client's project team. This results in better collaboration and coordination, leading to faster and more efficient project delivery.

## Access to local expertise

Our onshore team has a deep understanding of the local market, regulations, and industry standards, which helps us provide clients with tailored solutions that meet their specific needs.



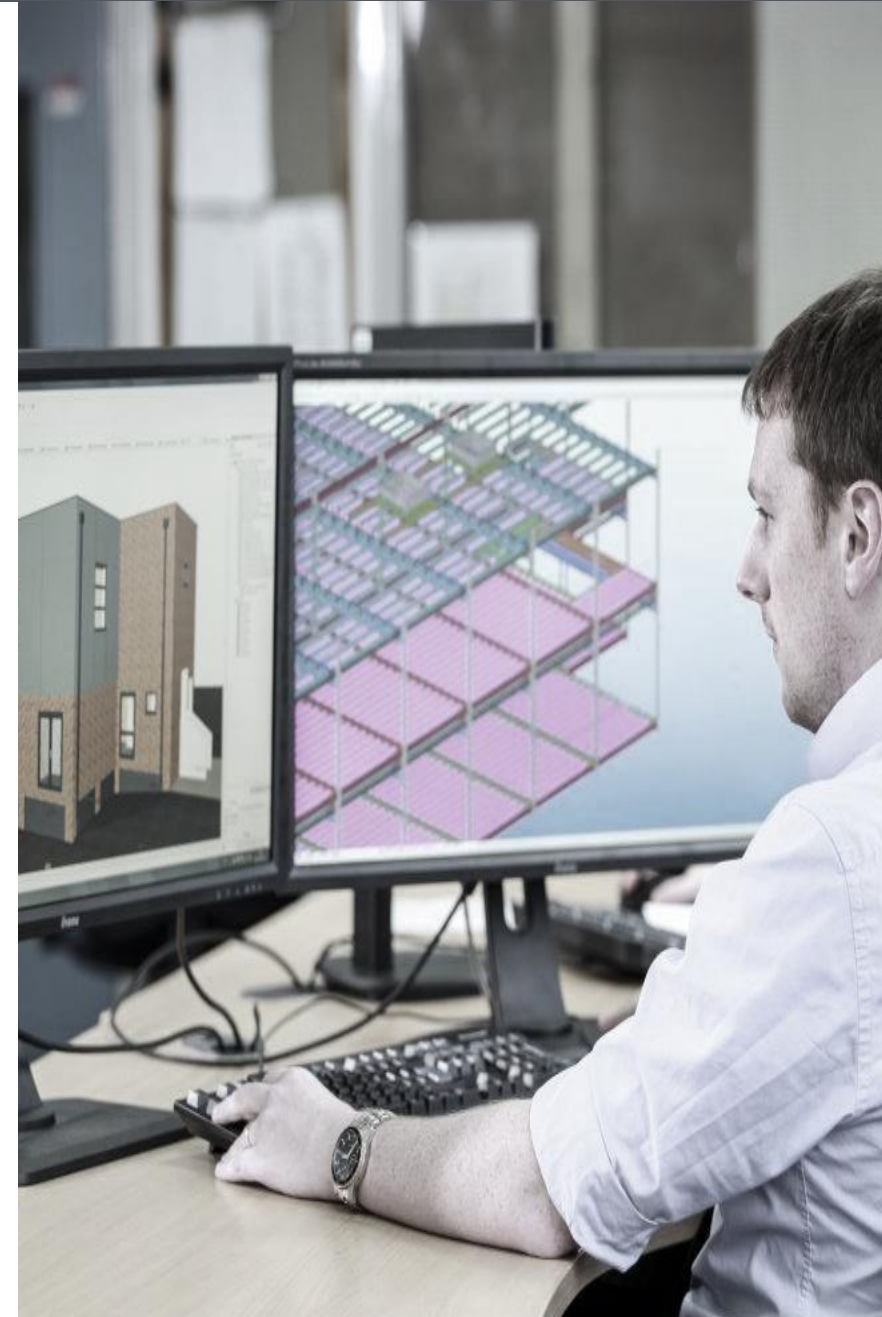
**MāRS**<sup>®</sup>

## Better quality control

Our onshore team is easily accessible and can provide clients with real-time updates and feedback. This ensures that the project is completed to the highest quality standards, with minimal errors and rework.

## Improved project management

Our onshore team can work closely with the client's project team to manage project timelines, milestones, and deadlines. This ensures that the project is delivered on time and within budget.



# Onshore Team Model

## How it works?

The Onshore BIM Team Model process is a structured approach to managing BIM projects. This process is designed to ensure that projects are completed on time, within budget, and to the highest quality standards. By working closely with clients and key stakeholders throughout the project lifecycle, BIM teams can identify and address potential issues early on, resulting in a more efficient and streamlined construction process. Additionally, ongoing post-project analysis helps to continuously refine and improve BIM processes and techniques, further increasing efficiency and reducing costs.

### Define Project Scope

- Work with client to define project scope, goals, and requirements
- Identify key stakeholders and team members

1

### Resource Allocation

- Allocate team members to the project based on their skills and experience
- Ensure team members have onsite access to necessary tools and software

2

### Develop BIM Execution Plan

- Develop a detailed BIM Execution Plan that outlines project requirements, schedules, and deliverables
- Collaborate with client to ensure alignment with project goals and expectations

3

### Post-Project Analysis

- Conduct a post-project analysis to identify areas for improvement and incorporate feedback into future projects
- Continuously refine and improve BIM processes and techniques

6

### Project Delivery

- Deliver final project models and documentation to the client
- Provide ongoing support as needed

5

### BIM Modeling and Coordination

- Create detailed 3D BIM models of project components
- Conduct clash detection and coordination meetings to ensure all components fit together as intended

4

# Offshore Team Model

## How it works?

### Planning

- In this stage, the client and offshore partner define the scope of the project, identify the necessary resources, establish project timelines, and determine the communication and collaboration protocols.
- The planning stage includes the signing of contracts and establishing the legal and financial framework for the partnership.

1

### Team Setup

- The offshore partner sets up the team with the necessary infrastructure, such as hardware, software, and IT systems.
- The offshore partner recruits and hires qualified professionals and ensures that they have the necessary training and certification. The client may also be involved in selecting team members and providing guidance on specific requirements.

2

### Knowledge Transfer

- The offshore team is trained in the client's processes, standards, and best practices. The client provides documentation and training materials, and the offshore team receives hands-on training to ensure that they have a thorough understanding of the project requirements.

3

### Project Handover

- In the final stage, the offshore team completes the project and hands it over to the client team.
- The client team assumes full ownership of the project.
- The offshore team provides documentation and training as needed to ensure a smooth transition.

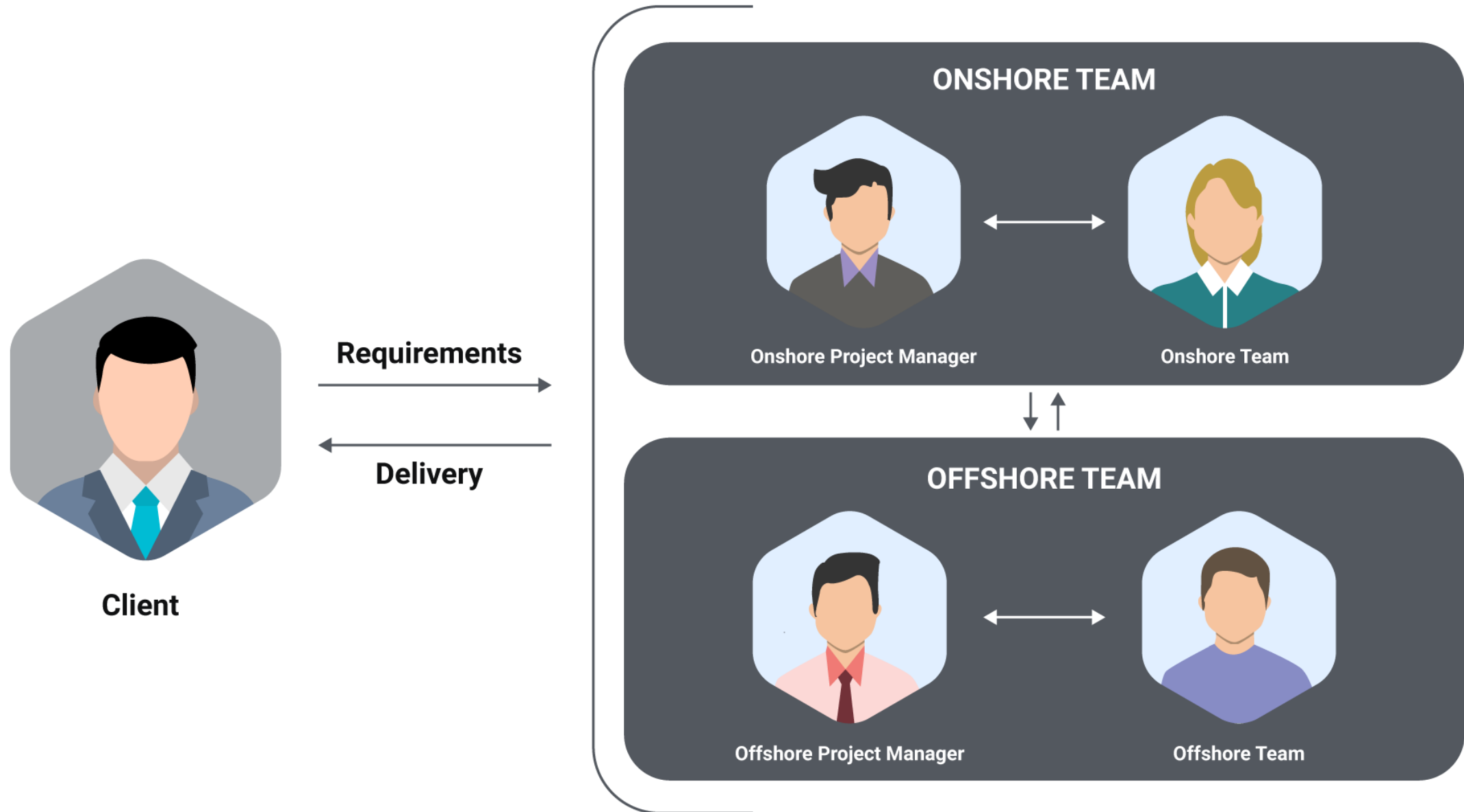
5

### Project Execution

- Once the offshore team is fully equipped & trained, the project execution begins. The offshore team works in collaboration with the client team to complete the project, adhering to the defined project scope, timelines, and quality standards.
- The offshore team communicates regularly with client team to provide progress updates and address any issues or concerns.

4

# Hybrid BIM Team model





# Hiring Process

**1** Request Team of Resources



**3** MaRS allocates resources according to requirements



**5** Scale Up and Scale Down team members as required



**7** MaRS manages the project and well integrated team



**2** Engagement Agreement



**4** Continuous Collaboration with onshore and offshore team



**6** Project Process Tracking with Quality Audits



**8** Submission of Final Project Deliverables



# Benefits of our Dedicated BIM Resources



Quickly extend operational capabilities



Maintaining control and oversight of the process



More cost-effective way to expand your business



Access to a larger pool of skilled workers



Ability to scale operations quickly and efficiently



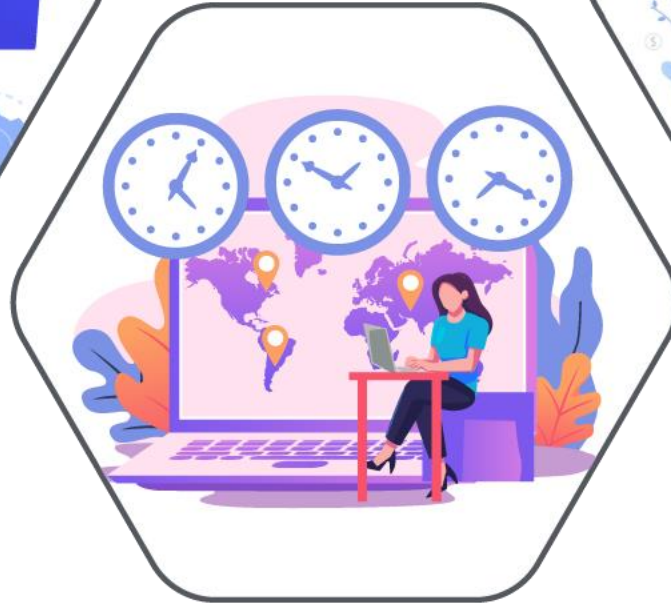
Reduce risk and improve overall performance

# Why Choose US?

How did our clients benefit from collaborating with MARS as a business partner?



**Knowledge,  
Expertise, and  
Software  
Proficiency**



**Time Zone  
Benefits**



**Cost Benefits**



**Power to Scale Up**

MARS®

---

# KEEP IN TOUCH



[info@marsbim.com](mailto:info@marsbim.com)



[www.marsbim.com](http://www.marsbim.com)